



# #766600 **WOMEN'S** QUILTED WOMEN'S VEST

- 100% Padded Polyester fabric
- Quilted front and back body with smooth shoulder panels and pocket
- Wind and water resistant
- Self-fabric collar with full length locking zipper
- Pouch pocket on front body with headset opening
- Bungee cord and hidden toggle on left side
- Drop-tail hem
- Embroidered Badger logo on lower left front body.

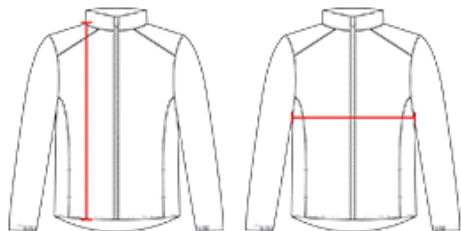
## COLORS



## SPECIFICATIONS

| Color   | XS   | S      | M    | L      | XL   | 2XL    |
|---|------|--------|------|--------|------|--------|
| <b>Piece Weight</b><br>measured in pounds     | 1.19 | 1.19   | 1.19 | 1.19   | 1.19 | 1.19   |
| <b>Spec Body Length</b><br>measured in inches | 26   | 26 1/2 | 27   | 27 1/2 | 28   | 28 1/2 |
| <b>Spec Chest Width</b><br>measured in inches | 18   | 20     | 21   | 23     | 25   | 27     |
| <b>Case Count</b><br># of units per case      | 24   | 24     | 24   | 24     | 24   | 24     |

## HOW TO MEASURE



These product specifications reference a product's measurements. For sizing information and guidance, please reference our sizing charts.

### BODY LENGTH

Measured on the front from the shoulder/neck intersection to the bottom of the garment.

### CHEST WIDTH

Measured across the chest, 1" below the armhole seam.